

## Professional Restoration with machines by Grassland 2.0

**From:** Stephen Thomforde <stevethomforde@gmail.com>

**Sent:** Friday, January 28, 2022 8:50 AM

**To:** Tyler Carlson <tyler@sfa-mn.org>

**Cc:** clenk@nwtf.net; kristen.bergstrand@state.mn.us; Ashley Conway, PhD <aconway@missouri.edu>; Bertsch, Callie - NRCS, St. Paul, MN <callie.bertsch@usda.gov>; Brad Gordon <BGordon@greatrivergreening.org>; Dean Current <curre002@umn.edu>; Ekola, Lindberg (BWSR) <lindberg.ekola@state.mn.us>; Gary Wyatt <wyatt@umn.edu>; Greg Booth <greg@sunupranch.com>; Jared Luhman <jared@sfa-mn.org>; Jeffrey Jackson <jeffj@umn.edu>; Jim Chamberlin <jchamberlin@hugllc.com>; Calvin Moschkau <mosch018@umn.edu>; Karl Hakanson <khakanso@umn.edu>; Kathryn Fernholz <katie@dovetailinc.org>; Keefe Keeley <keefe@savannainstitute.org>; Kent Solberg <kent@sfa-mn.org>; Lucinda Winter <lucinda@sfa-mn.org>; SNAKE RIVER FARM <Tom@snakeriverfarmmn.com>; Vickie Kettlewell <vickie@sunupranch.com>; Wayne Monsen <wayne@sfa-mn.org>

**Subject:** Re: Today's meeting link

Hay Everyone,

I'm so sorry I missed the meeting. Please send updates to my work email, ([stephen.thomforde@stantec.com](mailto:stephen.thomforde@stantec.com))

I will offer some comments to your questions over the weekend.

I will send you a seed mix template (framework) for savanna restoration I have used and modified since for 15+ years. In general I use a 2-step strategic seeding process (at least 2 seed rains). The first seed rain begins with grass and sedge species only (maybe a few inexpensive wildflowers), so we can continue noxious weed management, especially with broadleaf herbicides, where we seed approximately 20 - 30 native grasses from various functional groups/guilds = functional trait ecology. The second seed rain occurs once noxious weeds and nutrient threshold have achieved an acceptable level and provides more forbs. The second seed rain occurs when grasses have established enough to promote fire (or haying), hence increasing C:N ratios to the benefit of edible native species. This follows "State Transition" models used to validate ecological restoration.

I presented last weekend (2 presentations) at the WI Grazing Conference GrassWorks, how to incorporate natives in pastures and also on the future, Conservation Working Lands. I have worked with Grassworks for more than a decade now, when we first established Grassland 2.0 with Randy Jackson and Laura Paine, a tour de force grazing project throughout WI. Great group and I was honored to have been invited to present.

We are just finishing our second project, 46 acres in Washington County, grazed by bison, Belwin. We are loving this cold weather, as we have 5 more projects and 122 acres to go with the frozen ground. Let me know if you would like to visit one of our work sites for a tour / field trip. That would be fun. Attached are pictures from yesterday. Pic 1 is a finished harvest that was so thick with noxious shrubs you could not walk through it last week. Pic 2 - 3 the machine we use. Pic 4 before and after, 1 season growth, red slashes show trees I would have also cut..., but the land manager, as usual, saved too many trees. I never have had a land manager say they would have cut fewer trees, and instead, always say they wished they would have cut more trees.

Take care and keep up the good work!

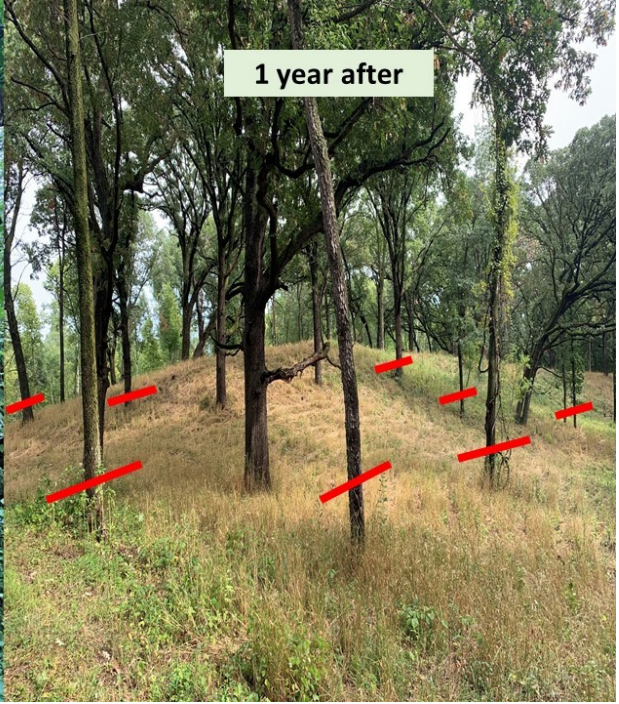








Before



1 year after